

ALARM WORKING FUNCTION

4. LCD shows alarm event



AWAY1-01 12:00
PANIC-00 ALARM

3. Trigger outdoor siren and turn the light on

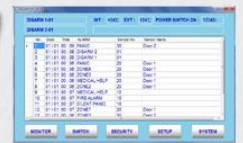


5. Call-out to play voice message
And send SMS event to user phone

6. Send event data via Wi-Fi to server
then send to user phone app



7. Send event via SMS/IP
to alarm event center



1. The intruder is detected by sensors

2. Console is trigger the alarm

HOME AUTOMATION FUNCTION



TEMP LO ON -82
(0-40)
TEMP HI OFF -81
(0-40)

Temperature controls AC power on/off



Temperature Sensor



AC Power loss detector



Turn on/off the
AC Power Switch

AC SW TIMER -59
(4/5:0000-2359)

Timer to control AC power on/off



FS222B/D/E Wi-Fi/GSM Alarm console



APP via SMS/IP turn on/off
The AC Power switch

- **Markets & Applications:**

The FS222B PSTN/GSM 3G Alarm Console with SIM5320 module dialer digital/voice/SMS report offers Four-Bands 850/900/1800/1900 GSM system. It is approved by R&TTE and GCF.

The transceiver module board can combine with Fronti wireless accessories, like keypad/sensors/siren. It is a simple and easy operation on full SMS operation and setting function.

It can option Wi-Fi module for combine with smart phone FS330A APP.

- **Features:**

1. 10pcs remote controller and 70pcs sensors, they can be set to have different alarm functions of 24H, bypass, delay, door chime and silence.
2. Set program's data by FS310W keypad, FS330W PC software and send SMS.
3. Set to save local language to the console / event / sensor's name for the report.
4. Can connect to PC via USB port on FS330W window software to read/write setting all programs.
5. It can record 40 seconds and 4 kinds of different emergency voice messages by user.
6. Pre-set to save 2 phone numbers for digital dialer CONTACT ID on alarm calling-out.
7. Pre-set to save 4 phone numbers for playing Voice messages on alarm calling-out.
8. Pre-set to save 3 phone numbers for sending event SMS on alarm calling-out.
9. Low battery supervision is on the console and on each individual sensor.
10. Built-in input NC/NO port can connect to wire type sensors, alarm console or panic buttons to call-out to report alarm event.
11. Built-in 2 wires alarms output ports can trigger external siren, and NC/NO relay switch can control the light/CCTV.
12. It can control the FS148S wireless external siren and the report event to FS310W wireless keypad LCD.
13. Alarm will call-out to contact ID, and then voice dialer will play voice alarm message.
14. Alarm will send SMS with alarm event, sensor number/name and user name address.
15. Built-in rechargeable back-up battery, Tamper Switch and Power Failure Detector can automatically call-out report alarm event.
16. Call-in to send SMS command to set working mode and setup alarm program data, it will auto reply SMS to confirm.
17. Call-in to send SMS command to console to request replying working mode.
18. Can combine with FS330A APP via SMS to setting working/program data and receive alarm data.
19. Can option IOT Wi-Fi module to combine with APP via cloud server on anytime and anywhere working.
20. The smart phone APP can view the all setting program alarm data and all event log of the console.

SPECIFICATION

Power Source	DC 12V 2A by AC adapter
Stand-by Current	80mA (Max)
Working Current	500mA (Max)
Back-up Battery	9.6V/1.2Ahr rechargeable
Battery Back-up time	12HRS (Min)
Working temperature range	-10 deg°C to 60 deg°C
Working frequency	433.92.MHz or 869.25MHz
Broadcast range	150M in a free space
Dimensions	190L x 128W x 56H (mm).Weight:950g
Package Dimension	L290 x 180W x 70H (mm).Weight:1.25kg

PACKAGES

FS222B GSM Security Console dialer Digital/Voice/SMS Rechargeable Back-up battery & AC adapter,DC12V/2A IOT Wi-Fi module and app (Option)